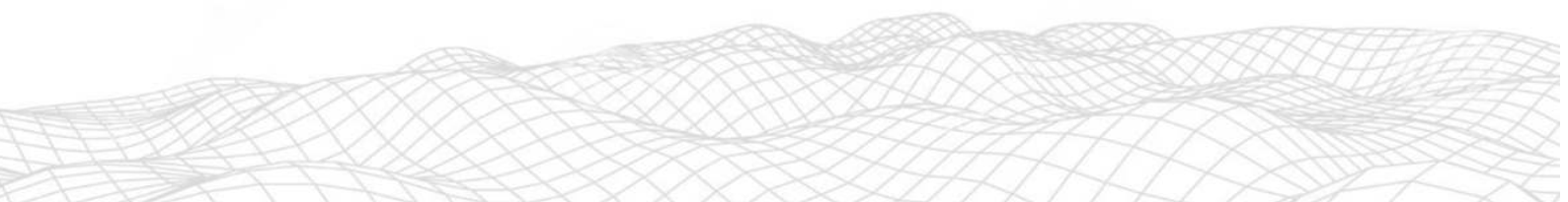




## **FARM MAPPING SERVICES**

- 1. Drone Scan & Drawn Map**
- 2. Drawn Map from Google Earth Imagery**

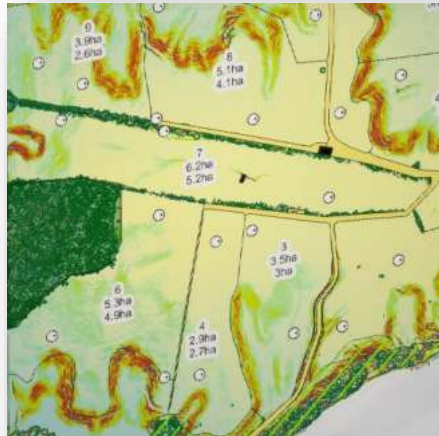
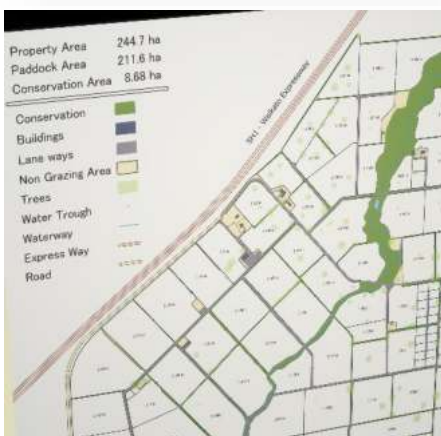


# FARM MAPPING WITH AGRIDRONECO

## OPTION 1

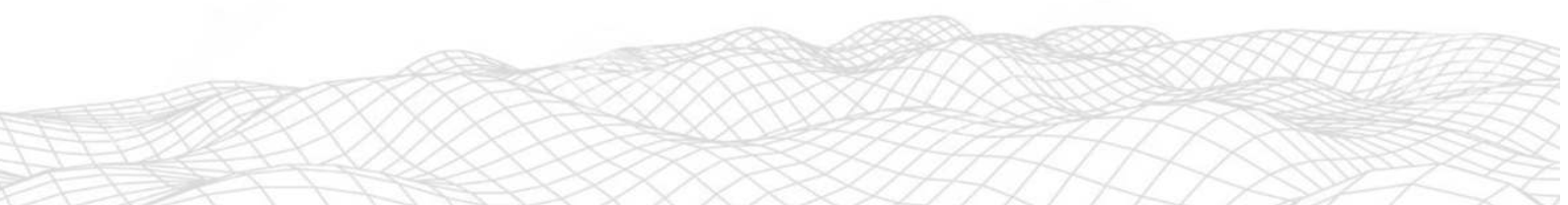
### Drone Scan to Drawn Farm Map

We'll come to your farm and fly the drone across it to produce a high resolution aerial image as well as scan the terrain to build a Digital Surface Map



# THE PROCESS (DRONE SCAN & DRAW MAP)

1. Upon arriving at your farm, Agridroneco will discuss your farm's boundaries, potential hazards, and livestock movements. They will then plan the drone flight to scan your property, which takes approximately 45 minutes per 100 hectares. The drone flight will provide an aerial image of your farm with an accuracy of 10cm.
2. Back at the Agridroneco office, the drone images are downloaded and stitched together to create one high-resolution aerial image of your property.
3. The aerial image is uploaded to Agridroneco's mapping software, where they begin constructing your farm map.
4. A draft of the farm map is then emailed to you for inspection. You can review and make sure everything is correct and that the layout meets your preferences. You can also print the draft and add any additional details you would like to include, such as paddock numbers/names, effluent paddocks, hazards, assembly points, speed limits, water lines, effluent lines, and electric fence switches/lines.
5. Once Agridroneco receives the additional details, they will be professionally incorporated into the farm map, unless you opt for separate maps for water lines, hazards, contour/elevation/aspect, etc.
6. The draft map can be sent back and forth until you are completely satisfied with the final farm map.



# PRICING

For our standard drone farm mapping service which gives you a:

- Both PDF farm maps (blank background and contour map)
- Digital shapefile (We can arrange to send this to your fertilizer company)

## **Drone Farm Map**

We charge a \$500 starting fee plus \$4.00 per hectare of the farm.

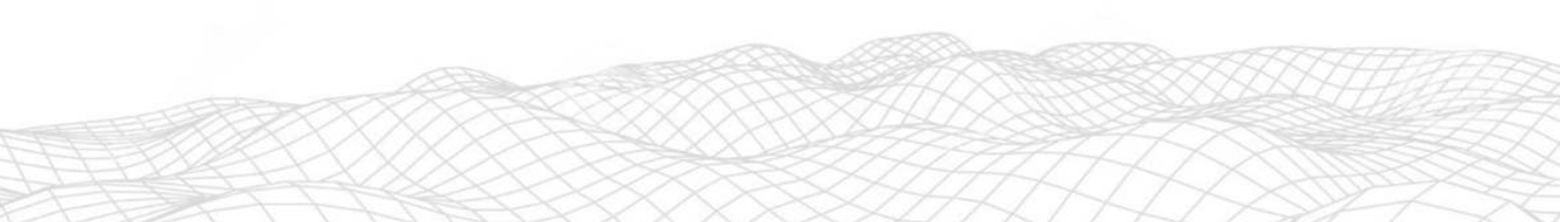
Example: (100 hectare farm x \$4.00) = \$400 + \$500 = \$900 (excluding GST)

## **Satellite Farm Map**

We charge a \$250 starting fee plus \$2.00 per hectare of the farm

Example: (100 hectare farm x \$2.00) = \$200 + \$250 = \$450 (excluding GST)

For travel the first 100km is free and then a \$1.60 will be charged from then on. We have bases in Tauranga, Matamata and Ashburton.





# WHAT YOU'LL RECEIVE

We will provide you with a PDF map via email, which you can either print yourself or have professionally printed. Additionally, we will send you the digital shapefile via email or to your fertiliser company upon request. Both Ballance and Ravensdown have online software that can receive the shapefile of your farm map, allowing you to record your fertiliser applications for each individual paddock.

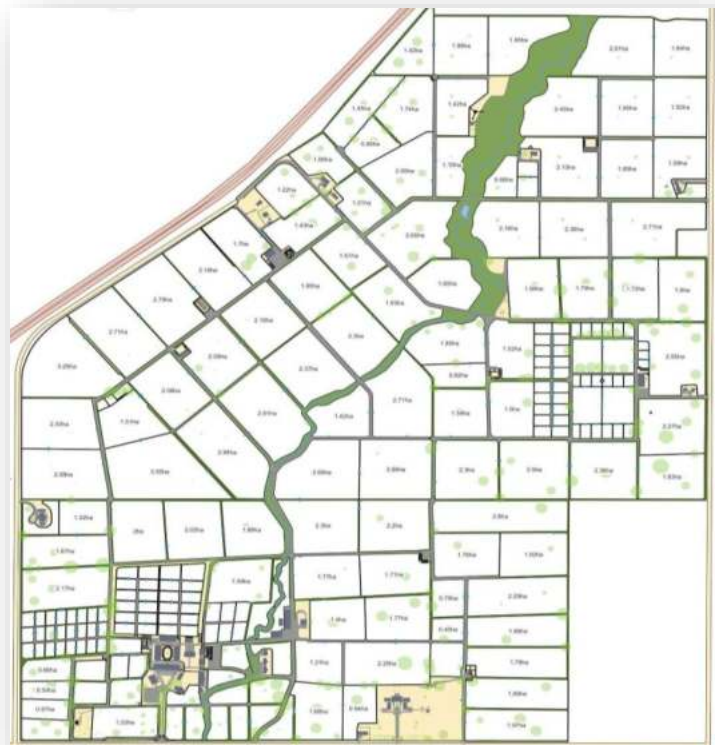
Moreover, other farming software companies such as TracMap, FarmIQ, and Halter also utilize farm map shapefiles.

Once everything has been finalised, you'll receive:

1. **Standard farm map**
2. **Aerial image map (on request)**
3. **Shapefiles (digital files of your farm map for integration with third party software eg. Tracmap, myballance, farmiq, regional council)**

## **Standard farm map**

This is a map of your property with all the info but without the aerial image.



## AERIAL ORTHOMOSAIC

This is an image of your farm made up of hundreds of smaller images taken by the drone. You can specify what info you would like displayed over the image. E.g. Paddock info, fences



## SHAPEFILES

The digital shapefile can come in a range of formats. Most farming softwares accept shp.or kml. file formats. The image below is displaying a kml. file of a farm's paddocks through Google Earth.

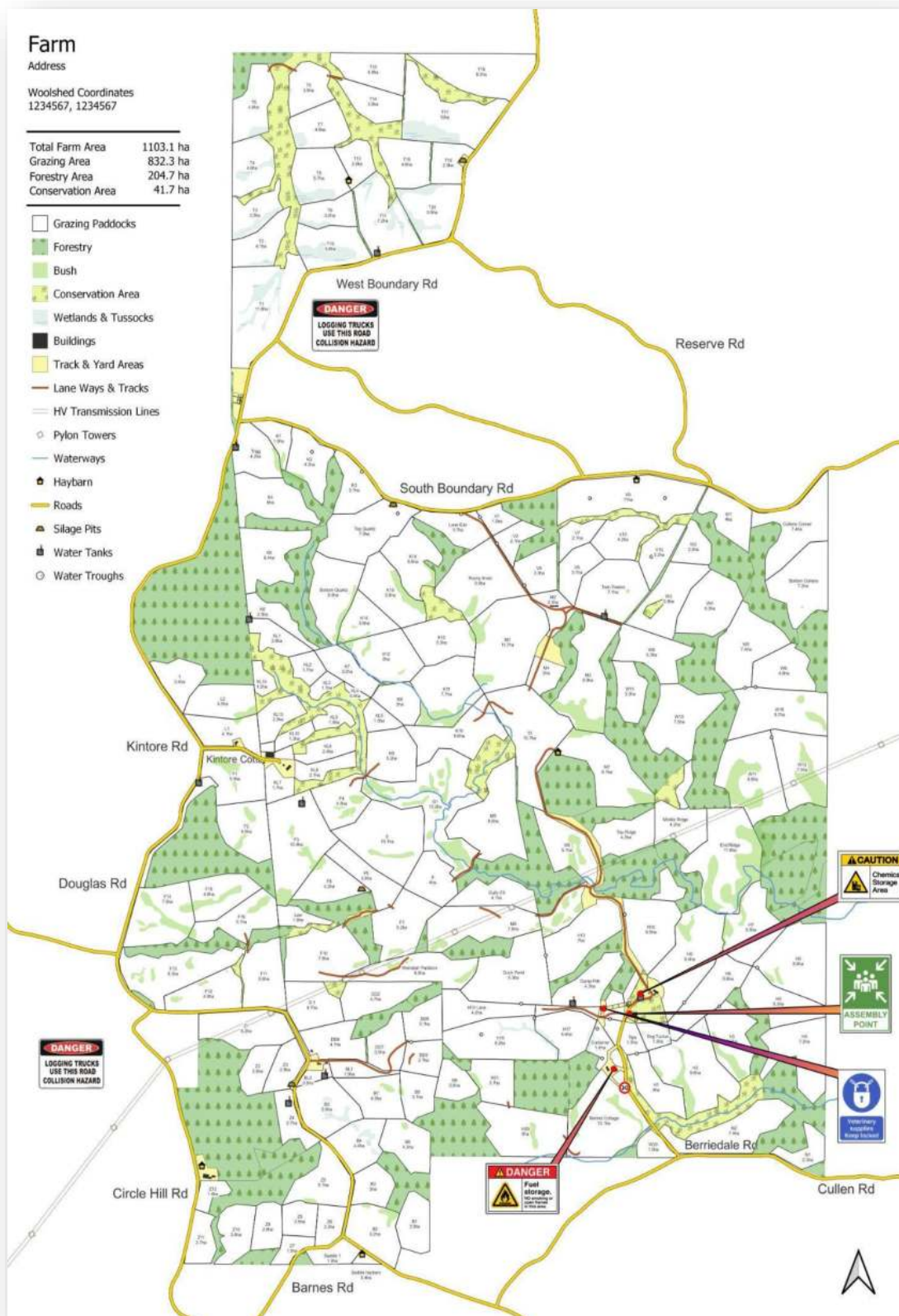


## MAP KEY SYMBOL EXAMPLES

-  Grazing Paddocks
-  Forestry
-  Bush
-  Conservation Area
-  Wetlands & Tussocks
-  Buildings
-  Track & Yard Areas
-  Lane Ways & Tracks
-  HV Transmission Lines
-  Pylon Towers
-  Waterways
-  Haybarn
-  Roads
-  Silage Pits
-  Water Tanks



# HAZARD MAP OPTIONS

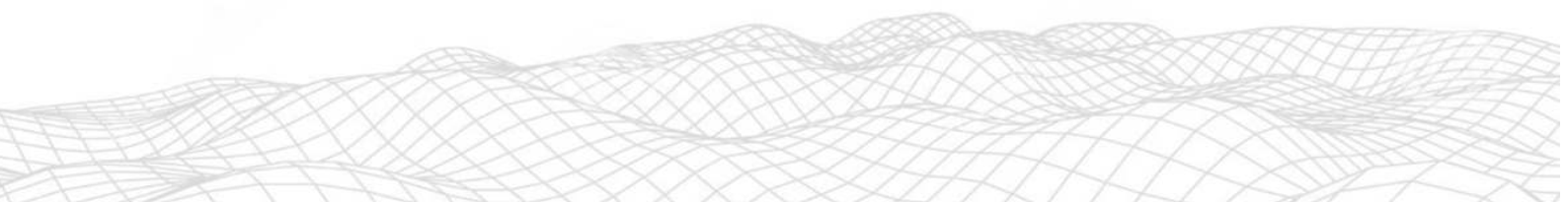


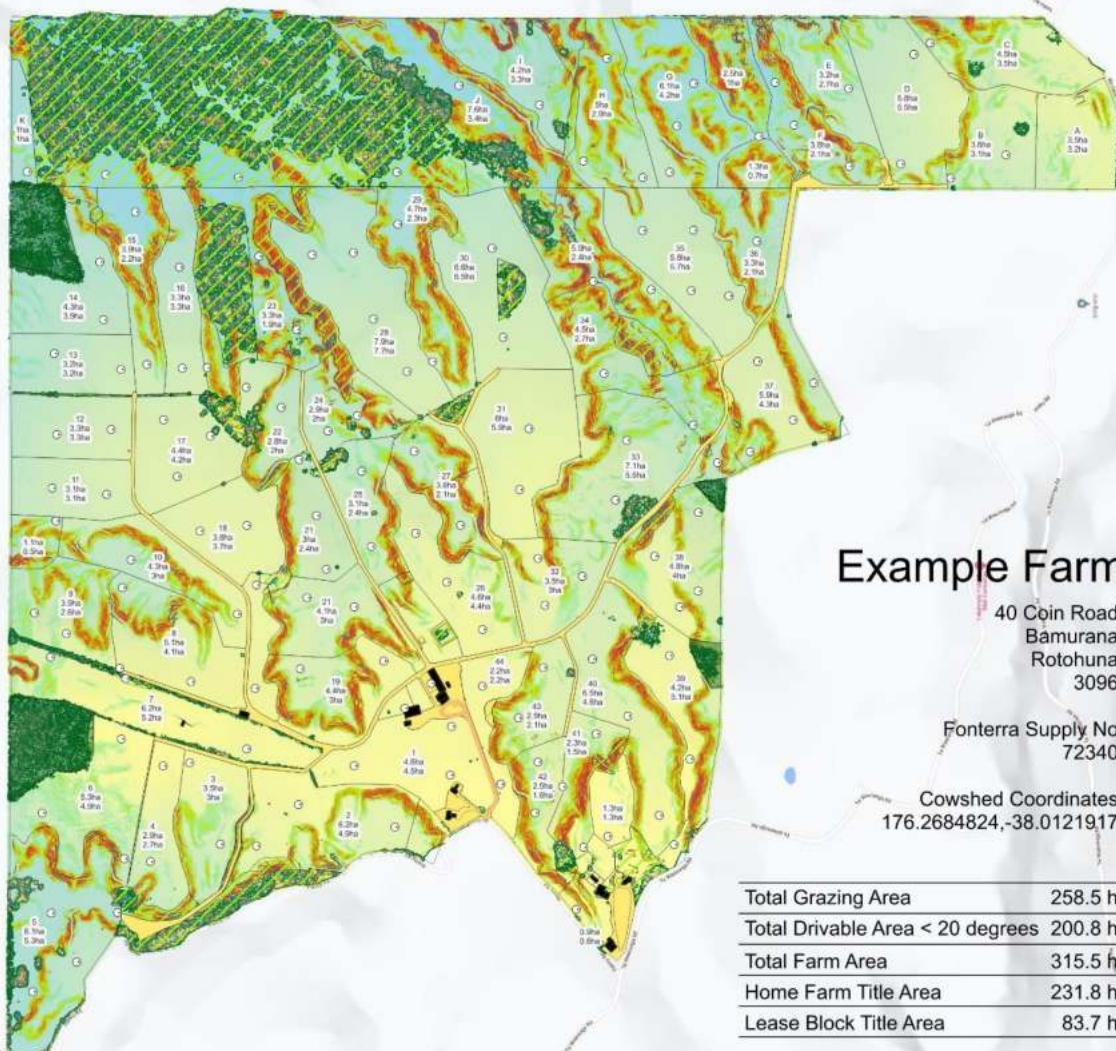


# OPTIONAL FEATURE ADDITIONS

The optional features below can be added to your map or made into a separate map for \$90 (excluding GST) each.



- Underground water lines, effluent lines, taps, hydrants
- Electric fence switches and lines
- Official LINZ title location and size
- Trees
- Elevation Map
- Contour Map
- Aspect Map





Forestry   
 Non-Effective Area   
 Buildings   
 Tracks & Yards   
 Road   
 Water Troughs 

Slope  
 Degrees  
 90°   
 0° 

Elevation  
 Above sea level  
 470m   
 350m 

**agridroneco**   
 farm maps & shapefiles  
[www.agridroneco.co.nz/](http://www.agridroneco.co.nz/)  
[daniel@agridroneco.co.nz](mailto:daniel@agridroneco.co.nz)  
 022 352 6708



# Farm Name

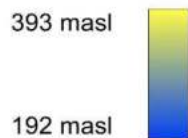
Property Address

Cabin Coordinates:  
123,1233456, 123,123456

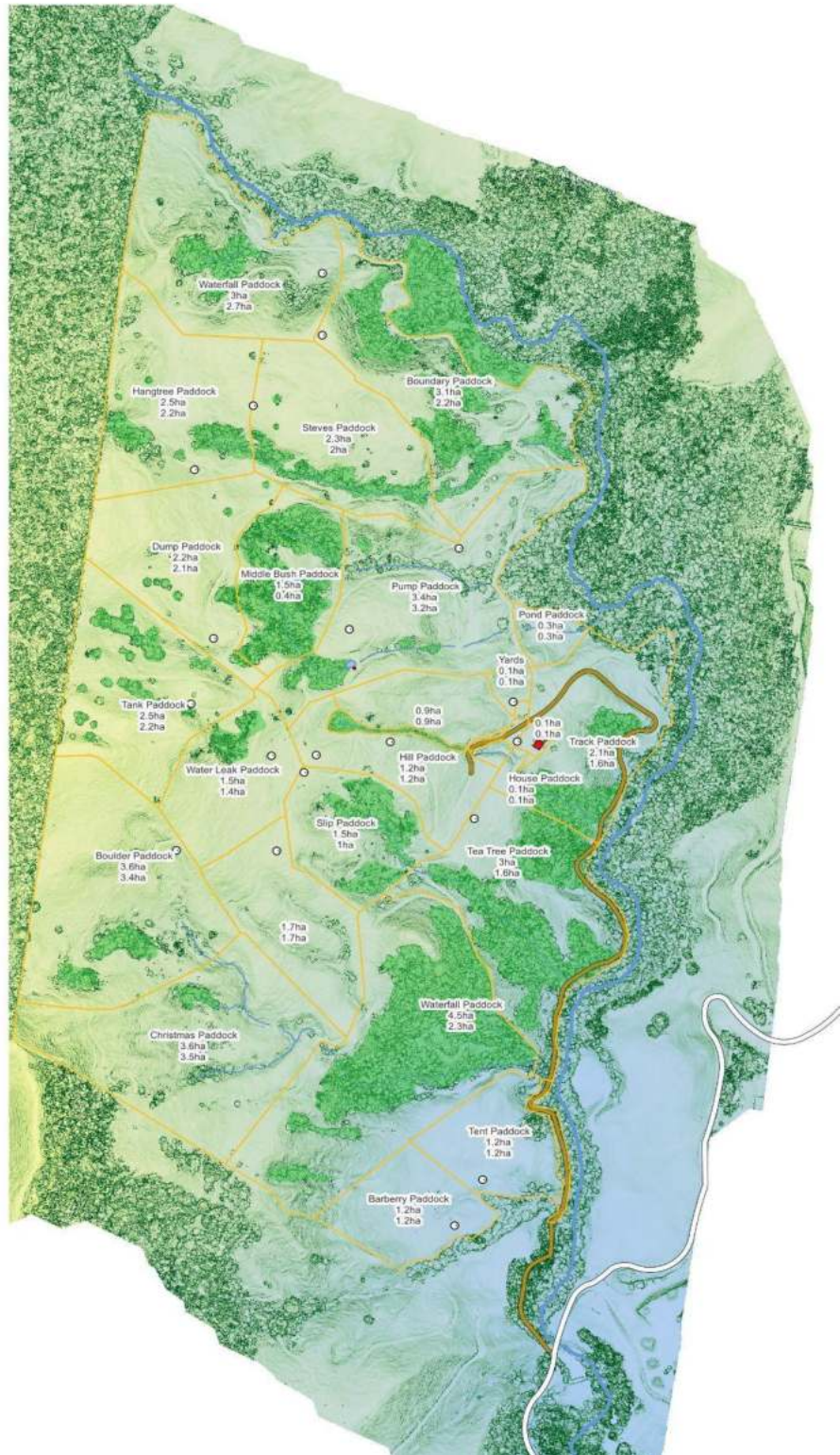
Title Area 43.99 ha  
Property Area 47.5 ha

- Building 
- Trees 
- Pond 
- Title Boundary 
- Water way 
- River 
- Track 
- Road 
- Water Troughs 
- Water Tanks 

Elevation (masl)



agridroneco  
farm maps & shapefiles  
www.agridroneco.co.uk  
01234 567890  
0123 456 789





# PRINTING & SIGNAGE

Agridroneco provide a wide range of printing and signage options including tear off pads, laminated posters, whiteboards and plastic or aluminium signs. Prices exclude GST.

For farms 300 hectares or larger we will provide a free A3 tear off pad of your farm map.

## Tear Off Pad

A4 (210 x 297mm) tear off pad	\$40.00
A3 (297 x 420mm) tear off pad	\$50.00

## Laminated Sheet

A3 (297 x 420mm) laminated sheet	\$90.00
A2 (420 x 594mm) laminated sheet	\$110.00
A1 (594 x 841mm) laminated sheet	\$130.00

You can draw on the laminated sheets with a whiteboard pen. They are a cheaper alternative to a whiteboards which cost around a \$700 if you have the farm map printed out on them.

## Whiteboards

Talk to us for more info.

## 3mm thick plastic sign (you can't draw on this)

(716 x 500 x 3mm)	\$260.00
(1000 x 729 x 3mm)	\$280.00

## 1.5mm thick aluminum sign (ideal for outside the shed)

(716 x 500 x 3mm)	\$470.00
(1000 x 729 x 3mm)	\$490.00

The dimensions can be changed if you would like something more specific.

# CONTACT

If you would like more info or have any questions. Feel free to email, text or call.

[daniel@agridroneco.co.nz](mailto:daniel@agridroneco.co.nz)  
022 352 6708

